

Storage Exec™ 5.3 Advanced Reporting Option

Assessing Your Storage Environment

A critical backbone for storage resource optimization is shaping the right policies that govern storage usage and retention activities. To shape the right policies and make effective storage decisions administrators need a comprehensive, in-depth understanding of their storage environment.

Advanced Reporting Option

The Storage Exec Advanced Reporting Option provides unparalleled reporting capabilities that go far beyond the standard reports provided by Storage Exec Server. The ARO equips administrators with the detailed and extensive storage analysis needed to take corrective action to eliminate waste and ensure optimal use of storage resources.

Maximum Reporting Capabilities

The ARO contains more advanced reporting and queries that build on the standard capabilities of Storage Exec Server. These reports enable administrators to gain a full, comprehensive understanding of what is going on in their environment and answer questions such as:

- Files that haven't been accessed in over a year?
- What critical files are not being protected?
- How does my environment compare to storage management best practices?
- What are current trends in disk-usage?

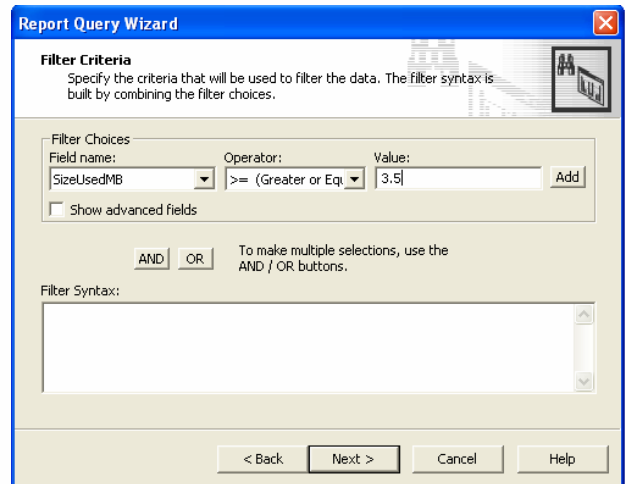
For a complete list of the standard Storage Exec reports and the additional reports provided by ARO, please see the tables on the following pages.

Advanced Reporting Option Provides:

- 18 Additional Pre-Defined Reports (28 Total)
- Ability to Edit and Enhance Pre-Defined Reports
- Ability to Write and Create Custom Reports

Generate Custom Reports

The content and appearance of each Storage Exec report is determined by report queries. Each of the reports included in Storage Exec Server and ARO are defined by pre-configured queries. ARO contains more advanced reporting and queries which enable administrators to edit pre-configured reports and to generate their own custom reports. This helps administrators tailor the advanced reporting analysis of ARO to meet their specific business practices or requirements.



A Report Query Wizard is provided with ARO to help users quickly and easily build custom reports. Through the Wizard, users can specify the criteria used to filter data.

Advanced Reporting Option - Deployment

The Advanced Reporting Option is recommended with each Storage Exec Server.

PRICING

Advanced Reporting Option	\$295 / Server
---------------------------	----------------

Free Trial Evaluation

For a free trial evaluation of ARO, you can download Storage Exec 5.3 by visiting www.veritas.com/storageexec. During installation, you will be prompted to select each Option and/or Agent you would like to evaluate.



Report Format Properties

The wealth of information provided by Storage Exec reports is accessible in a variety of formats. Each of these format properties is highlighted in the table below.

STORAGE EXEC REPORT FORMATS	
Report Format	Description
HTML	Report output in traditional browser (.htm) File management capabilities are not available in this format.
Active HTML	Report output is displayed in Internet Explorer. With Active X controls, users can immediately open, move, or delete a file. New Backup Exec integration enables users to backup files with Backup Exec directly from the HTML report.
Text	Report output is in text format.
Excel	Report output is a Microsoft Excel format.
TSV	Report output is in a tab-separated values format, this can be imported into most spreadsheets or database applications.

Storage Exec 5.3 Standard Reports

Storage Exec 5.3 Server comes standard with ten built-in reports. These reports have pre-defined queries that determine the output criteria of each report. A detailed list and brief description of each report is provided in the table below.

STORAGE EXEC 5.3 SERVER	
Standard Reports	
Duplicate Files	Identifies duplicate files that may use an excessive amount of space. This information is useful for cleaning up disk space.
File Type Summary	Provides usage details for the disk profile. Drill down into category details by double-clicking a category in the pie chart or from the report table. In addition, files are sorted by file groups and the size of each file group is calculated.
Large Files	Identifies large files based on the file's size. This is useful for locating and recovering disk space quickly.
Files To Remove	Identifies various temporary file types that can be removed from the system
Graphics Files	Displays all the graphics files contained in the resource. This is useful for locating graphic files by name or type.
Large Users Summary	Identifies space by user. This information is useful to track space usage by a user identifier.
Media Files	Displays all the media files contained in the resource. This is useful for locating media files by name or type.
Microsoft Office Files	Displays all Microsoft Office files contained in the resource. This is useful for locating Microsoft Office files by name or type.
New Files	Identifies files created today. This is useful for determining environment changes that may have causes system or disk capacity problems
Space By User Summary	Displays the utilization by each user in the domain for the selected path.

Advanced Reporting Option – Pre-Defined Reports

Not only does ARO provide the ability to create custom reports, it also provides eighteen additional pre-defined reports. A detailed list and brief description of each report is provided in the table below.

ADVANCED REPORTING OPTION

Additional Reports

Audit Analysis	This report can be used to provide a comprehensive audit of files and folders. It uses five separate queries to obtain the data. Some of the queries can be modified to limit the scope of the output.
Best Practices	Provides a representation of storage management best practices for detailed disk space analysis. This report identifies files by type, duplicate files, large scale files, files not being backed up, most commonly used files, and nightly backup requirements.
Daily Storage	Provides daily storage usage details for the managed resource.
Disk Drive Summary	Lists all partitions and their capacity, free space and type. You may drill into the partition for more details information.
Files Created This Month	Identifies files based on when the file was created. This is useful for determining environment changes that may have caused system or disk capacity problems
Files Not Accessed in Over a Year	Identifies files that have not been accessed in over one year.
Files Not Being Backed Up	Identifies files that have been modified but have not backed up according to the NTFS archive bit. This bit is used by backup applications to indicate a file's backup status.
Insecure Files	Displays "at risk" files. Files that any user account can access are considered to be "at risk" file
Internet Files	Displays all the files contained in the managed resource with extensions *.htm, *.html, *.url, and *@*.
Large Duplicate Files	Selects large files that contain duplicate copies within the passed directory path.
Large Folder Resources Summary	Identifies folder resources larger than 2 MB. This information is useful to quickly locate large folder resources.
Most Commonly Used Files	Presents the amount of raw capacity accessed each day. This is useful for balancing applications, data, and users across available resources and to prevent under-used or over-burdened file servers.
Pinpoint Security Problems	This report identifies files that contain undefined Access Control Entries (ACEs) within an Access Control List and also identifies files that have an undefined owner. Undefined ACE impact file system performance as well as system security integrity, whereas files that have an undefined owner are useful to pinpoint potential security breaches, orphaned files, and to ensure files are owned by the proper user.
Space Allocation Summary	Identifies all of the space limits defined on the server.
Space Allocation Trend Summary	Reads the trending database (SCTrend.mdb) and reports about the space allocation resources, space used by them, their space limit, the owner, and other information.
Space By Folder Resources Summary	Identifies all the folder resources in the managed resource to the depth specified in the report content property. This information is useful to quickly identify large folder resources and folder resource trees.
Space By Group Summary	Identifies space by file group. This information is a useful to track space usage by group identifier.
Weekly Storage Summary	Provides weekly storage usage details for the managed resource.