

## VERITAS NetBackup™ 6.0 Shared Storage Option

### INNOVATIVE DATA PROTECTION

VERITAS NetBackup™ Shared Storage Option helps decrease tape hardware and management costs while enabling high performance data protection and storage networking resiliency.

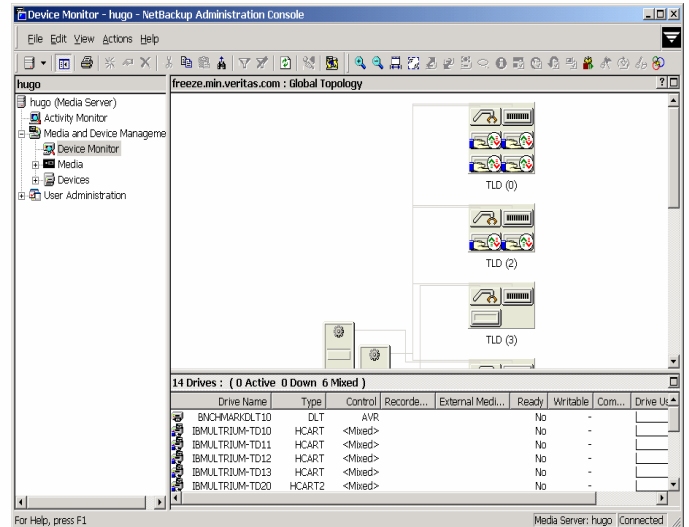
Leveraging the advantages of Fibre Channel, SCSI, or iSCSI connectivity, the Shared Storage Option allows individual tape drives (standalone or in a robotic library) to be shared dynamically among NetBackup Media Servers and NDMP NAS devices.

To ensure consistency across NetBackup servers, a central device allocator and configurator consolidates shared tape drive management and configuration

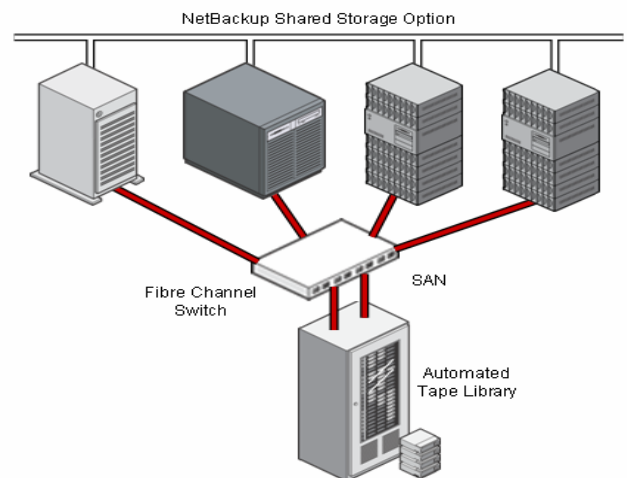
Automatically allocating shared tape drives as backup and restore operations dictate, NetBackup Shared Storage increases the utilization of tape drives that often remain idle. The end result facilitates a lower overall cost of ownership of tape resources to protect data throughout the enterprise.

### SHARED STORAGE OPTION HIGHLIGHTS

- **Minimized Backup Costs** — Increase tape drive utilization and lower number of total drives required
- **Reduced Backup & Recovery Times** — Shift resources to the demanding backup and recovery operation
- **NDMP NAS Support** — Share tape drives between NDMP NAS devices and NetBackup Media Servers
- **Rapid Deployment** — Graphical wizards quickly discover and configure shared tape drives
- **Checks and Balances** — Configuration Analyzer verifies that device configuration settings are consistent and checks for potential configuration problems.
- **SAN Resiliency** — Advanced technologies including SCSI Reserve/Release to protect against resource conflicts and improve drive availability
- **Fault-Tolerant** — Access additional tape resources in the event of a drive or network failure, includes support for multiple paths to tape drives
- **Firewall Support** — Share tape drives across firewall
- **Centralized Device Allocation** — Centralized control of which NetBackup Servers are utilizing shared drives



*NetBackup's easy-to-use Administration Console graphically displays all server and drive connectivity*



#### NetBackup Support:

NetBackup Enterprise Server  
NetBackup Server (NDMP and NetWare Only)

#### Platform Support:

Windows, Solaris, AIX, HP-UX, Tru64, Red Hat Linux, SUSE Linux, NetWare, and NDMP NAS

#### Tape Robot Support:

TLD, TLH, TLM, TL8 or drives controlled by the Automated Cartridge System (ACS)

**VERITAS Software Corporation**

350 Ellis Street | Mountain View, CA 94043 | 650-527-8000 or 866-837-4827