

# Veritas NetBackup™ 6.0 Enterprise Server

Now from Symantec™

## Innovative data protection

As the recognized leader for enterprise-class backup and recovery, Veritas™ NetBackup Enterprise Server software is designed to help provide complete data protection for the most complex UNIX®, Windows®, Linux®, and NetWare® environments. Intuitive graphical user interfaces help enable organizations to manage all aspects of backup and recovery and to maintain consistent backup policies that are deployed across the enterprise. Veritas NetBackup software provides database- and application-aware backup and recovery solutions for Oracle®, IBM® DB2® UDB, Microsoft® SQL Server, Microsoft Exchange Server, Microsoft SharePoint Portal Server, SAP NetWeaver, Sybase, Informix, and Lotus Notes® and Domino® Server.

## Product Highlights

- **End-to-End Data Protection**—Data protection for all environments, from desktop to data center to vault.
- **Single Solution for All Platforms**—NetBackup helps you to consolidate and standardize your backup and recovery operations, protecting all major UNIX variants, Windows, Linux, and NetWare systems.
- **Unlimited Scalability**—Centralized management and control, high-performance technology, and a flexible multi-tier architecture enable NetBackup software to adapt to the growing needs of the modern data center.
- **Unparalleled Performance**—Synthetic backups consume less network bandwidth and decrease the impact on the application host since files are backed up only once. Multiplexing up to 32 different data streams to a single tape drive helps to realize the maximum rated throughput of your storage hardware.

- **Management and Reporting**—The NetBackup Operations Manager delivers Web-based management and reporting for large NetBackup enterprise users. Provides real-time monitoring, historical reporting, administration, alert management, and troubleshooting assistance.
- **Advanced Data Protection**—Perform low-impact, high-performance backup and restores with the NetBackup Advanced Client. This consolidated suite of snapshot-based technologies enables FlashBackup, Instant Recovery, Off-host, and Block-Level Incremental data protection.
- **Automate Disaster Recovery**—The NetBackup Vault option automates the disaster recovery process by helping to simplify tape rotation and the creation and management of tape duplicates for offsite vaulting. NetBackup Bare Metal Restore™ streamlines the server recovery process.

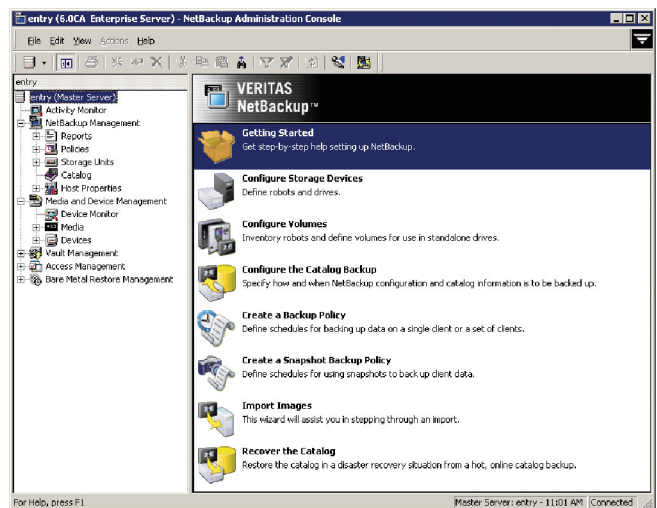


Figure 1. NetBackup Administration Console provides a single point of management that enables backup administrators to manage a larger number of servers more efficiently.

- **Extensive Media Management**—Allows users to share an automated tape library between heterogeneous systems—UNIX, Windows, Linux, NetWare, or Network Attached Storage (NAS)—allowing NetBackup users to more effectively leverage their expensive tape and drive resources.
- **Security**—Secure your backup data by selecting from NetBackup software’s 40-, 56-, 128-, or 256-bit encryption. NetBackup software’s low-impact encryption option ensures the data is secure before it leaves the client. NetBackup Access Control offers the flexibility to restrict or provide specific access levels to NetBackup software’s administrative functionality.
- **Storage Networking**—NetBackup software supports a broad range of tape library, tape drive, and Storage Area Network (SAN) interconnect technologies from leading vendors. Dynamically share individual tape drives over SCSI or a SAN, or utilize the optional NetBackup for NDMP agent to help protect popular NAS devices.

### Disk-Based Data Protection and Synthetics

Veritas NetBackup software’s disk-based data protection solutions offer near-instant data recovery while improving backup performance and reducing exposure to data loss.

Veritas NetBackup software’s Advanced Client delivers several disk-based, advanced backup and recovery snapshot techniques via a simple, easy-to-use and configure client interface. A snapshot policy configuration wizard helps the user to quickly configure snapshots and use them to easily perform Advanced Client backup and recovery operations. These advanced methods enable users to easily customize their environment based on their requirements for faster backups, faster restores, or lower impact backups.

Veritas NetBackup software enhanced disk staging capabilities gives NetBackup users additional flexibility when configuring their backup and recovery strategy. Disk staging can facilitate faster backups and restores since there is no tape device latency, and the nonmultiplexed backup images generated through staging can be used for faster recovery from tape.

Veritas NetBackup software delivers synthetic backup functionality that significantly enhances backup and recovery operations. NetBackup users can store their incremental backups on disk and then synthesize them into a full backup and process the data to tape, helping to reduce the time required to perform a recovery. NetBackup backs up new or changed files only once, decreasing the backup impact on the application host. Synthetic backups reduce the amount of data being moved over the network, minimizing the network bandwidth required for backup and recovery.

### Disaster Recovery

#### NetBackup Disk-Based Data Protection Solutions

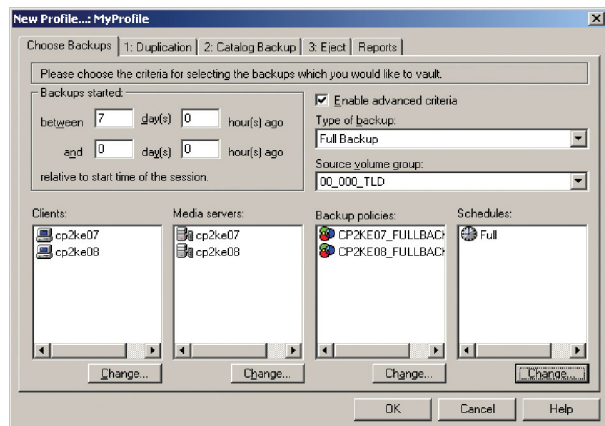
Backup to Disk	• Leverages the performance benefits of disk for data protection storage
Disk Staging	• Automates backups to disk and relocation to long-term storage
Synthetic Backups	• Creates new, streamlined backup image from previous full and incremental backups
Advanced Client	• Integrates snapshot management for low-impact backups and rapid restores
Virtual Tape Option	• Support for third-party virtual tape products
Desktop and Laptop Protection	• Continuous disk-based data protection whether in the office or on the road

To help enable fully automated disaster recovery, NetBackup software offers an option for complete vault management—Veritas NetBackup Vault. This option helps simplify tape rotation and the creation and management of tape duplicates for offsite vaulting.



## Fact Sheet: Data Backup Recovery Veritas NetBackup 6.0 Enterprise Server

Vault manages the ejection of tape duplicates to the robotic Cartridge Access Port (CAP) or Media Access Port (MAP), the creation of pick/pull reports, and the monitoring of the retention periods for offsite media. NetBackup Vault facilitates the management of duplicate media created either concurrently with the primary backup or at a scheduled time, such as during nonproduction hours.



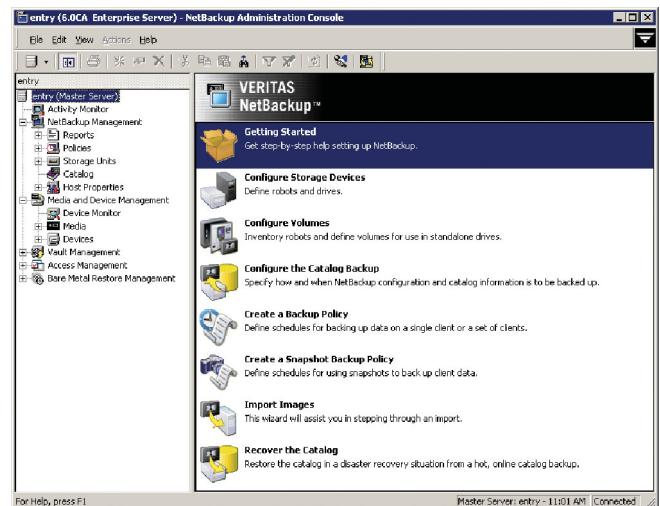
**Figure 2.** Veritas NetBackup Vault software provides highly configurable vaulting profiles that allow the user to choose the criteria for selecting the backups that should be sent offsite.

The Veritas NetBackup Bare Metal Restore option is designed to automate and streamline the server recovery process, making it unnecessary to manually reinstall operating systems or configure hardware. Using simple commands, complete server restores can be accomplished in a fraction of the time without extensive training or tedious administration. One solution addresses the demands of a variety of platforms, helping to eliminate the need for customized restore procedures on each platform. Server restores will be faster, easier, and more successful, the result being that your organization will be back online fast.

- Fully Automated System Recovery
- Dissimilar System Restore for Windows systems
- Point-in-Time Restore
- Restores Machine Configuration Information
- Windows, UNIX, and Linux support

### Next-Generation Management and Reporting

NetBackup Operation Manager provides NetBackup deployments with a single, intuitive Web-based portal for management, monitoring, and reporting across the user's worldwide backup and recovery enterprise. Operation Manager offers a consolidated view of all backup servers in the user's environment, helping to increase the amount of data that each administrator can manage, lowering costs since vital statistics and configuration details of backup and recovery operations can be quickly and easily viewed from one location.



**Figure 3.** The NetBackup Operation Manager's centralized Web-based interface provides a single management view of all NetBackup servers in the user's worldwide enterprise.

# Fact Sheet: Data Backup Recovery Veritas NetBackup 6.0 Enterprise Server

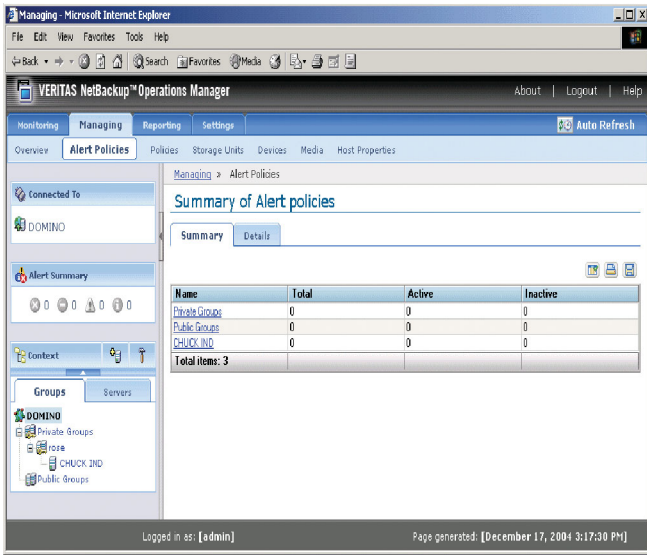


Figure 4. The NetBackup Operation Manager's alert policies summary displays real-time alerts by user-determined groups.

## Reporting Made Easy

NetBackup Operations Manager provides built-in reports that can be used immediately or customized to fit your organization's reporting needs. The predefined reports can be copied, modified, and saved for use at a later point in time. In addition to the built-in reports, you can create custom reports for tracking the performance of your backup environment. These custom reports can be saved, reused, imported, exported, and scheduled for execution as necessary.

NetBackup Operations Manager reports that are available include backup performance, media utilization, job details, job summary, and backup job success. NetBackup users can create policies based on the historical information obtained from these and other reports to plan for future changes to their NetBackup environment.

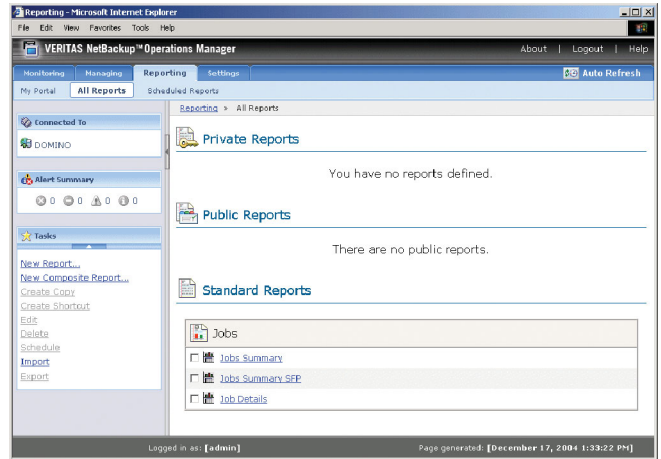


Figure 5. Reports are easily generated by Operations Manager.

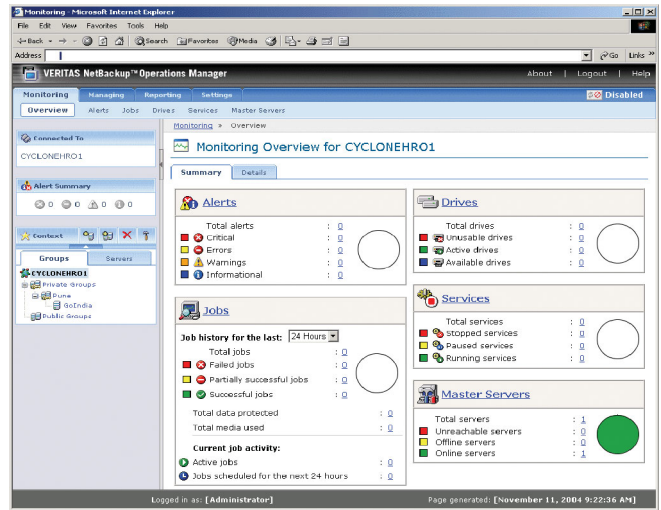


Figure 6. Real-time alert and notification management consolidation gives users a single health view of their entire environment.



## Fact Sheet: Data Backup Recovery

### Veritas NetBackup 6.0 Enterprise Server

NetBackup Features	Benefits
<b>Performance</b>	
Synthetic Backups	Enables quick client restore from a single backup image. Synthetic backups consume less network bandwidth and decrease the impact on the application host.
Disk Staging	Disk staging facilitates faster backups and restores since there is no tape device latency and nonmultiplexed backup images can be used for faster recovery.
Checkpoint/Restart	Allows a failed backup or recovery job to be resumed from the last checkpoint. If either a backup or a recovery job fails, the issue causing the failure can be corrected or the job can be resumed from that last checkpoint rather than at the beginning of the job. This saves valuable time. Backup and recovery jobs can also be suspended and resumed as necessary.
Multiplexed Backup	Ability to write multiple data streams from one or more clients/servers to a single tape drive for optimum performance.
Inline Copy	This feature enables the creation of multiple concurrent backup images, each with unique retention attributes, run either simultaneously with the primary backup or after completion of the primary backup. For disk-to-disk and/or disk-to-tape backups.
Online NetBackup catalog backup	Online full or incremental NetBackup catalog backups are possible while backup and recovery jobs are running. Significantly improves data Recovery Point Objectives (RPO) and Recovery Time Objectives (RTO).
<b>Management and Reporting</b>	
Tape volume, drive, and library viewing	Report on tape utilization, drive configuration, and more.
Error message identification, categorization, and troubleshooting	Easily diagnose problems without having to parse transaction logs. Error explanations and recommended actions have been integrated into NetBackup interfaces to further simplify troubleshooting.
<b>Media Management</b>	
Enterprise Media Manager	Centralizes NetBackup media and device databases. Improves scalability.
Automatic robotic/tape drive configuration	Provides the ability to specify policies for the automatic generation of drive names. Helps to greatly reduce the time required to configure tape devices. Automatically configure swapped tape drives.
Broad tape device support	Support for all leading tape device providers, including ADIC, Compaq, Dell, Exabyte, HP, IBM, Overland Data, Qualstar, Quantum, Sony, Spectra Logic, StorageTek, and Sun, enables enterprises to select best-of-breed technologies.
<b>Heterogeneous Support</b>	
Broad platform support	Support for all major UNIX platforms, Microsoft Windows, Linux, Novell® NetWare, and others, allowing enterprises to leverage their current infrastructure or choose best-of-breed technologies to handle their data protection requirements.
Support for leading networking topologies	Leverage Network Attached Storage (NAS), Gigabit Ethernet (GbE), and more for backup and recovery.
Advanced software and hardware snapshot support	With the Veritas NetBackup Advanced Client, NetBackup software leverages Network Appliance SnapVault, HP® Business Copy, Hitachi Shadow Image, EMC TimeFinder, EMC Clariion, and Sun™ StorEdge ShadowImage for zero-downtime backup operations.



## Fact Sheet: Data Backup Recovery

### Veritas NetBackup 6.0 Enterprise Server

NetBackup Agent/option	Benefits
Advanced Client	Easy-to-use and configure snapshot-based data protection that enables advanced backup and recovery methods for databases and file systems. Allows users to optimize their configuration based on recovery time and backup speed requirements.
Bare Metal Restore Option	Automated server recovery option that streamlines the recovery process and accelerates complete system restores of Windows, UNIX, and Linux servers.
Desktop and Laptop Option	Extends enterprise data protection to the user level. Automates the copy of data to network shares or file servers while allowing for the synchronization of multiple systems.
Encryption Option	NetBackup software's low-impact encryption option ensures the data is secure before it leaves the client. Data can be encrypted at the 40-, 56-, 128-, or 256-bit levels.
NDMP Option	Provides reliable, high-performance data protection for NDMP-enabled Network Attached Storage (NAS).
Shared Storage Option	Enables dynamic tape drive sharing between NetBackup media servers and NDMP NAS devices. Helps increase tape drive utilization and lowers the number of total drives required.
Vault Option	Integrated module for complete, automated offsite tape management, from the creation of duplicates to be brought offsite to the tracking of offsite media retention periods for determining tape reuse and more.
Virtual Tape Option	Provides NetBackup support for third-party disk-based virtual tape offerings. IT administrators can quickly configure and integrate virtual tape disk-based data protection technology into existing NetBackup configurations and policies. Separate StorageTek Virtualization Option available.
Database- and application-aware backup and recovery	Online, granular databases and applications support for Oracle, Microsoft SQL Server, Microsoft Exchange Server, Microsoft SharePoint Portal Server, IBM DB2, SAP NetWeaver, Sybase, IBM Lotus Notes and Domino Server, and IBM Informix.

Veritas NetBackup Component/Option	Platform Support <sup>1</sup>							
	HP-UX®	HP® Tru64	IBM AIX®	Linux	Microsoft Windows	Novell NetWare	SGI IRIX	Sun™ Solaris™
NetBackup Enterprise Server	√	√	√	√	√	√ <sup>2</sup>	√ <sup>2</sup>	√
NetBackup Client	√	√	√	√ <sup>3</sup>	√	√	√	√
NetBackup Advanced Client Option	√		√	√	√			√
NetBackup Shared Storage Option	√	√	√	√	√	√	√	√
NetBackup Vault Option	√	√	√	√	√		√	√
NetBackup Bare Metal Restore Option	√		√	√	√			√
NetBackup NDMP Option	√		√	√	√			√
NetBackup Encryption Option	√	√	√	√	√		√	√

1. This is a summary of NetBackup Platform Support. For complete NetBackup software and hardware compatibility information, please see the Compatibility Lists at <http://www.support.veritas.com> or contact your Veritas sales representative or authorized Veritas reseller.

2. Media server support only.

3. Includes Linux on IBM zSeries client.



## Fact Sheet: Data Backup Recovery Veritas NetBackup 6.0 Enterprise Server

### **More information**

*Visit our Web site*

[www.symantec.com](http://www.symantec.com)

*To speak with a Product Specialist in the U.S.*

Call toll-free 1 (800) 745 6054

*To speak with a Product Specialist outside the U.S.*

For specific country offices and contact numbers,  
please visit our Web site.

### *About Symantec*

Symantec is the world leader in providing solutions to help individuals and enterprises assure the security, availability, and integrity of their information. Headquartered in Cupertino, Calif., Symantec has operations in more than 40 countries. More information is available at [www.symantec.com](http://www.symantec.com).

### *Symantec World Headquarters*

20330 Stevens Creek Boulevard

Cupertino, CA 95014 USA

+1 (408) 517 8000

1 (800) 721 3934

[www.symantec.com](http://www.symantec.com)

