

Product Guide

FAXmaker for Microsoft® Exchange Server is a native fax connector for Exchange Server, enabling users to send and receive faxes from any Windows®-based application via the Outlook™ messaging and collaboration client.

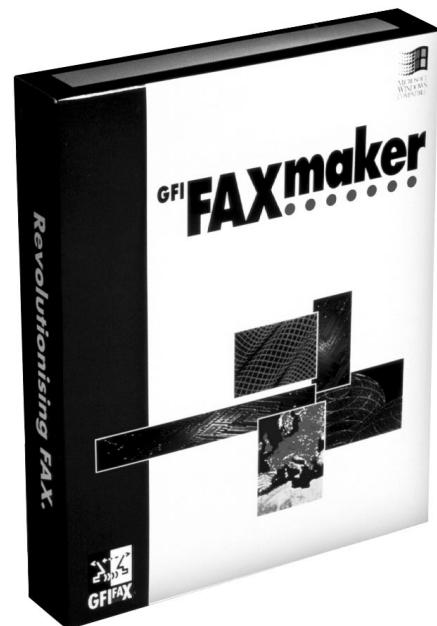
Microsoft®

What Is FAXmaker for Microsoft Exchange Server?

FAXmaker for Microsoft® Exchange Server from GFI FAX & VOICE is a fax server that integrates seamlessly with Exchange Server, allowing you to send and receive faxes from within the Microsoft Outlook™ messaging and collaboration client or the Exchange client. This means that FAXmaker is familiar in its use and saves you from switching to a separate fax server application each time you want to send a fax. Checking for faxes is easy too: You just check your Outlook Inbox.

FAXmaker has extensive fax features, including fax annotation, the ability to fax from any Windows®-based application, and the ability to attach Microsoft Office for Windows 95 and Office 97 documents. To send a fax, users select the Business FAX number from Outlook Contacts.

Server features include multiline support, fax broadcasting, automated fax delivery (inbound fax routing), call accounting, fax archiving, server-based document rendering, and support for popular fax modems and high-end fax cards such as Gammalink, Brooktrout, and integrated services digital network (ISDN). FAXmaker does not require a dedicated fax server and runs as a full service on the Microsoft Windows NT® operating system. Pricing starts from \$495 for a 10-user version.



Integration with Microsoft BackOffice

FAXmaker for Microsoft Exchange integrates seamlessly into the Exchange Server environment, taking advantage of the client user interface, standard messaging, user addressing, and public folders. Faxes can be sent from any Windows-based application by printing to the FAXmaker printer driver or by using the Microsoft Office Send command and attaching an Office document.

Client Platforms

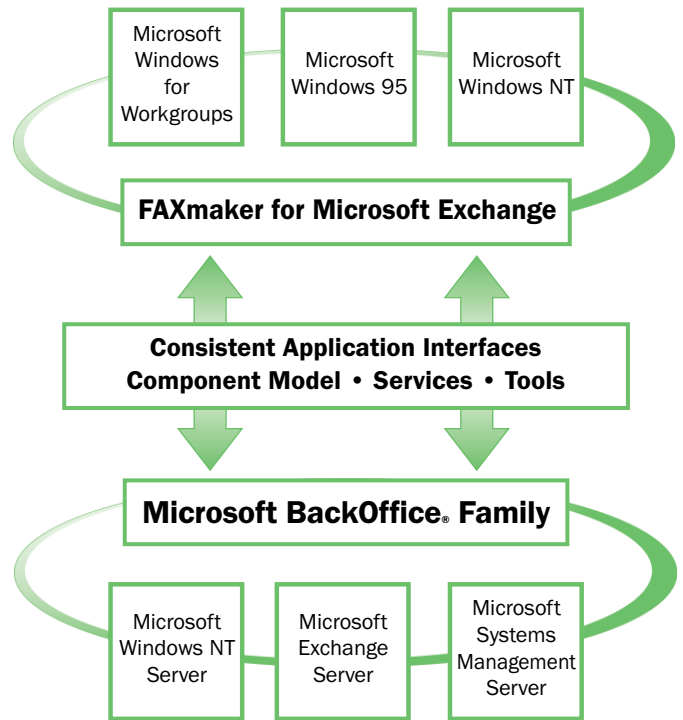
Microsoft Windows for Workgroups, Windows 95, Windows NT Workstation

Server Platforms

Microsoft Windows NT Server, Exchange Server, Systems Management Server

System Requirements for FAXmaker Server

- For server: Microsoft Windows NT Server operating system, Microsoft Exchange Server, and one or more supported fax devices
- 10 MB of available hard-disk space for client; 100 MB for server



2

Key Features of FAXmaker for Microsoft Exchange

- *Native fax connector:* Full integration with Microsoft Exchange Server.
- *Full integration with Exchange Administrator:* All fax-related user settings can be configured from the Exchange Administrator program.
- *Robust, multiline fax server:* The FAXmaker fax server runs as a service on the computer running Exchange Server and does not require a dedicated computer. Four fax lines are supported as standard and can be expanded up to sixteen lines per fax server using multiport boards and GFI-approved fax modems, fax boards, or active ISDN CAPI 2.0 cards.
- *Server-based rendering* of Microsoft Office for Windows 95, Office 97, and other documents.
- *Send and receive faxes* from Outlook or the Exchange client.
- *Supports the Outlook Address Book:* Users can select the Business Fax entry as fax recipient information.



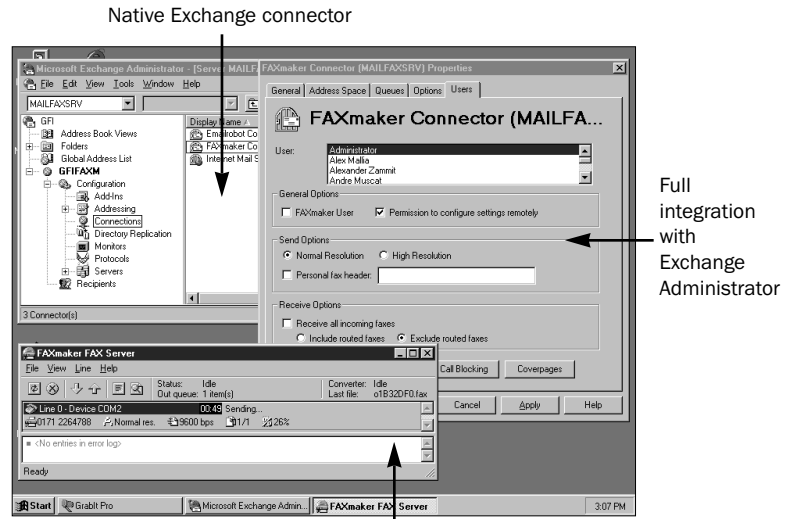
Fax viewer with annotation capabilities

Supports Outlook Business Fax field

3

Key Features of FAXmaker for Microsoft Exchange

- Includes fax printer driver to fax from any Windows-based application.
- Includes annotation capability: Incoming faxes can be annotated.
- Inbound fax routing using ISDN or analog direct inward-dial (DID), caller station identification (CSID), or optical character recognition (OCR).
- Personalized fax broadcasting using the Microsoft Office Mail Merge feature.
- Fax archiving and call accounting.
- Auto-print: Automatically print incoming and/or outgoing faxes.
- Application programming interface (API): FAXmaker includes a text API that allows you to send out faxes programmatically.



Fax server does not require a dedicated computer

Benefits of FAXmaker for Microsoft Exchange

- Savings on labor costs and time: Send faxes at the click of a button instead of having to print every fax, carry it to the fax machine, wait your turn, and possibly wait for the machine to retry when the number is busy.
- Automatically route incoming faxes to the right recipient as soon as they are received. This ensures timely and secure delivery of documents.
- Track fax activity by archiving faxes and using call accounting.
- Easily send faxes to groups of people.
- Schedule faxes to be sent during cheaper off-peak times.

These benefits translate into significant cost savings. The following table provides an example of how much a company might save by using a network fax solution:

	Manual Faxing	FAXmaker
Time to fax in minutes	5	0.5
Number of faxes per week	500	500
Average labor cost per hour	\$ 30	\$ 30
Cost per week	\$ 1,250	\$ 125
Weekly Savings		\$ 1,250

Company Information

About GFI

GFI FAX & VOICE is a leading supplier of Windows NT-based communications software. Founded in 1992, GFI has offices in Rochester, New York, USA; Hamburg, Germany; London, England; and Malta. GFI sells its products through a select group of more than 800 approved resellers and 50 international distributors.

For more information on GFI FAX & VOICE, please call (888) 2-GFIFAX or visit the World Wide Web site at <http://www.gfifax.com/>

European Sales Offices

London	+44-171-2262866
Hamburg	+49-40-306810-0
Malta	+356-382418

Microsoft Corporation

One Microsoft Way
Redmond, WA 98052-6399 USA

For Business Solutions

Industry Information:

<http://www.microsoft.com/industry/>

Solutions Directory:

<http://www.microsoft.com/industry/directory/>

Solution Product Guides:

<http://www.microsoft.com/industry/sguides/>

For Application Developers

Solutions Directory OnRamp:

<http://www.winntsolutions.com/onramp/>

MSDN[™] ISV Program:

<http://www.microsoft.com/msdn/isvprtnr.htm>

© 1998 Microsoft Corporation and GFI FAX & VOICE Ltd. All rights reserved.

The content of this document was provided by the independent solution provider and does not represent an endorsement by Microsoft.

This document is for informational purposes only and is subject to change without notice. MICROSOFT AND GFI MAKE NO WARRANTIES, EXPRESS OR IMPLIED, IN THIS SUMMARY.

Companies, names, and/or data used in screens are fictitious, unless otherwise noted.

Microsoft, BackOffice, the BackOffice logo, the Microsoft Internet Explorer logo, MSDN, Outlook, Windows, Windows NT, and the Windows Start logo are either registered trademarks or trademarks of Microsoft Corporation in the United States and/or other countries. FAXmaker is a registered trademark of GFI FAX & VOICE Ltd. Other product and company names mentioned herein may be the trademarks of their respective owners.



26 E. Main St.
Webster, NY 14580
(888) 2-GFIFAX

