



Sitekeeper[®]

Stop running from machine to machine!

Automate your patch and systems management in under an hour!

- Are all of your systems up to date on the latest patches and updates?
- Is your network free of unauthorized user-installed software?
- Do you own a license for every copy of software in use at your site?
- **Are you sure?**

If you can't answer a definite "yes" to all of the above questions, then you need an effective automated systems management solution. Maybe you're still pulling all-nighters to patch your systems, relying on clipboards and spreadsheets, or struggling with overly-complex management "bloatware". You know these aren't proper solutions, but who's got the time to implement something new?

NEW Sitekeeper 3.5 — As easy as clicking your mouse

Sitekeeper is the affordable, easy-to-use solution that allows you to automate your patch and systems management in under an hour. Sitekeeper requires NO dedicated server and NO special training. It's designed so that you can set it up and start managing right away. No more running from machine to machine—with Sitekeeper 3.5, you can handle patch deployment, inventory, license compliance reports, and remote software installation without leaving your desk!



Buy Sitekeeper now: www.executive.com/sk35

Sitekeeper

Systems Management Software—*Simplified*

Patchkeeper™ Centralized Patch Management Module

The time between the discovery of a vulnerability and the creation of a worm, virus or other exploit is getting smaller and smaller. If you don't have a centralized, automated patch management system in place, you have a major security problem. Use Patchkeeper to secure your systems right away!

- Automated Microsoft patch download and deployment
- Certification system allows you to verify patch operation before rolling patches out to your network
- Scan systems for missing patches and service packs
- Manage patches by criticality, OS, or software title
- Manage systems by domain, Active Directory, IP address range or user-specified custom groups

Inventory and license compliance module

You can't manage your network if you don't know what you have. Keeping on top of your hardware and software is vital. Outdated hardware slows your organization down, while unauthorized user-installed software or even a simple software tracking mistake can cost your business thousands of dollars in fines—and could cost you your job. The old "clipboard and spreadsheet" method of inventory just isn't good enough.

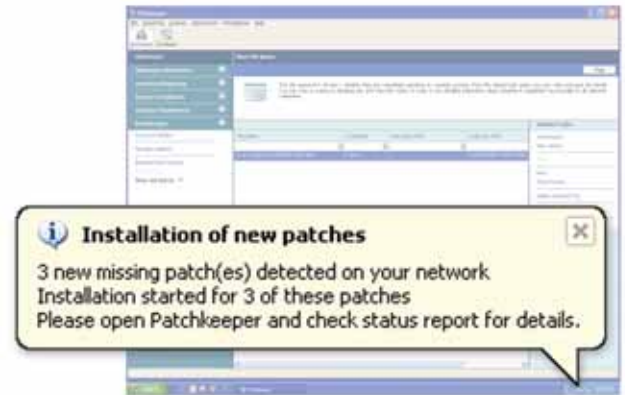
Toss the clipboard in the trash—new Sitekeeper 3.5 provides fast, accurate hardware and software inventories and easy-to-read license compliance reports.

- Fast, accurate hardware and software inventory scans
- No remote software needed on managed systems running Windows XP, 2000, Server 2003 or and NT4
- Quickly highlights areas of license non-compliance, avoids buying too few (or too many) licenses
- Zero in on outdated or non-standard hardware
- Easily track systems and components for upgrade and replacement planning

PushInstall™ remote software installation and uninstallation

For many companies, the cost of installing new software far exceeds the cost of the software itself, because of the need to install software manually, machine by machine. With the PushInstall module, you can roll out any MSI-compliant software package or update right from your desk. Just select the systems, select the installation package, and set a time for deployment, and Sitekeeper takes care of it!

- Install or uninstall any MSI-compliant software package
- Remotely remove unauthorized software
- No more all-nighters or weekend installation marathons



Sitekeeper makes automating your patch and systems management as easy as clicking your mouse

SITEKEEPER SAMPLE PRICING

Number of systems	Patchkeeper only	Sitekeeper Suite (all three modules)
100	\$16.90 per seat	\$37.05 per seat
250	\$15.85 per seat	\$35.10 per seat
500	\$14.30 per seat	\$34.00 per seat

Sitekeeper 3.5 system requirements:

Sitekeeper can be installed on any system running Windows Server 2003, XP Professional, 2000 Professional/Server (requires SP2 and IE 5.5 SP2 or higher), or NT 4.0 Workstation/Server (requires Service Pack 6 Internet Explorer 5.5 SP2 or higher).

Windows can manage any systems running Windows Server 2003, XP Professional, XP Home*, 2000 Professional/Server, NT 4.0 Workstation/Server, Me*, 98, or 95, and any Server Appliance running Windows.

* Requires installation of the Sitekeeper agent



Executive Software
7590 N. Glenoaks Blvd.
Burbank, California, 91504 USA
800-829-6468
www.executive.com

Executive Software Europe
Kings House, Cantelupe Road,
East Grinstead, Sussex RH19 3BE UK
(44) 1 342 327477
www.executive-europe.com

Buy Sitekeeper now.

For best price and for volume license discounts, contact your local reseller or call

1-800-829-6468 code 9144

to find a reseller near you (818-771-1600 code 9141 outside USA)

www.executive.com/sk35

Volume license, government and educational discounts available.