

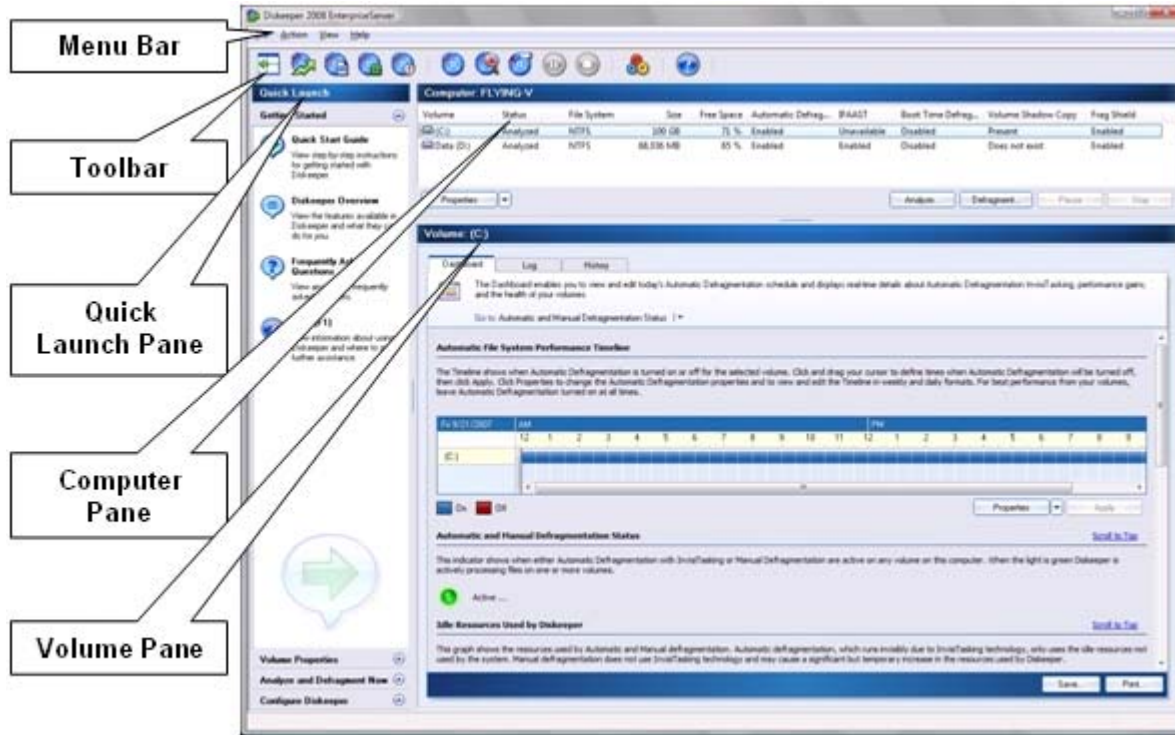
# Getting Started

If you are new to Diskeeper, here are some helpful tips for getting the best results.

Diskeeper has an entirely new approach to defragmenting when compared to what you may be accustomed to. Diskeeper was designed to allow you to automate background defragmentation without impacting the use of other programs. This procedure will demonstrate how to set up and use Diskeeper as it is intended to be used—for automatic system maintenance.

## The Diskeeper Console

Before we go too far, here's a look at the Diskeeper console:



**Menu Bar** — The Diskeeper menus provide an alternative way to access the features available from the toolbar and Quick Launch pane.

**Toolbar** — The Diskeeper toolbar gives quick access to commonly-used controls. Note that all the functions on the toolbar are available from the Diskeeper menus, and many can also be activated from the menu displayed when you right-click on a selected volume in the volume area. [More information](#)

**Quick Launch Pane** — The Quick Launch pane is where you'll find easy access to the commonly-used Diskeeper features, as well as several shortcuts for performing common tasks. [More information](#)

**Computer Pane** — The Computer pane shows all the supported disk volumes detected on your computer, and defragmentation status and general information about each volume. [More information](#)

**Volume Pane** — The tabs in the Volume pane area allow you to easily change between the [Dashboard tab](#), the [Log tab](#), and the [History tab](#).

## Let's Look At Your Hard Drive

The following brief steps will give you a quick and easy demonstration of Diskeeper on your own workstation or server, and show you the recommended settings.

1. In the Computer pane, locate and select one of the volumes on your computer.

Computer: FLYING-V

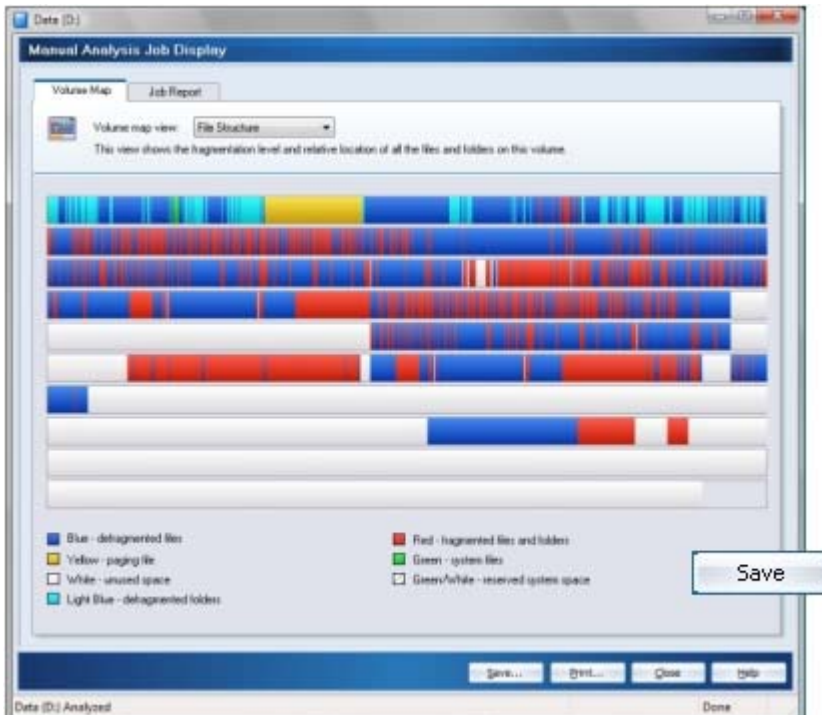
| Volume    | Status   | File System | Size      | Free Space | Automatic Defrag... | I/FAAST     | Boot Time Defrag... | Volume Shadow Copy | Frag Shield |
|-----------|----------|-------------|-----------|------------|---------------------|-------------|---------------------|--------------------|-------------|
| (C:)      | Analyzed | NTFS        | 100 GB    | 71 %       | Enabled             | Unavailable | Disabled            | Present            | Enabled     |
| Data (D:) | Analyzed | NTFS        | 68,036 MB | 65 %       | Enabled             | Enabled     | Disabled            | Does not exist     | Enabled     |

Properties Analyze... Defragment... Pause Stop

- In the Quick Launch pane, expand the **Analyze and Defragment Now** task. Next, click **Analyze** to start the analysis. Keep in mind the analysis may take a few seconds—the larger your volume, the longer this will take.

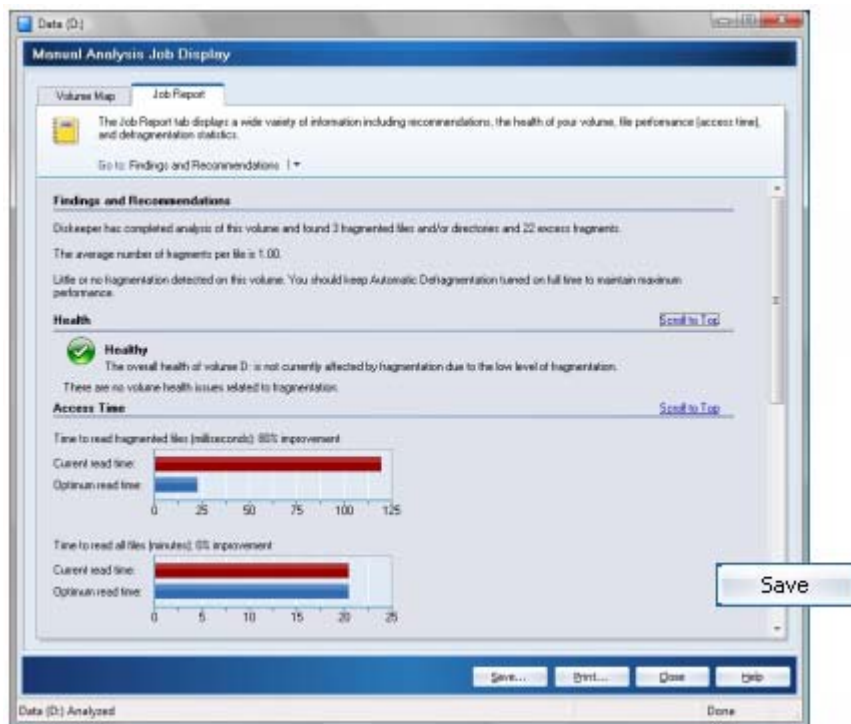


- The Volume Map tab gives you an at-a-glance view of the condition of your volume. As the legend at the bottom of the screen explains, the red areas show the extent of fragmentation on the volume. You can click **Save** at the bottom of the screen to save a bitmap file of the Volume Map.



- After the analysis finishes, click the **Job Report** tab. The Job Report tab provides fragmentation statistics, volume health information, file access times, lists of the most fragmented files on the volume, and recommendations for achieving and

maintaining optimal performance. Save this particular analysis by clicking **Save** at the bottom of the Job Report.



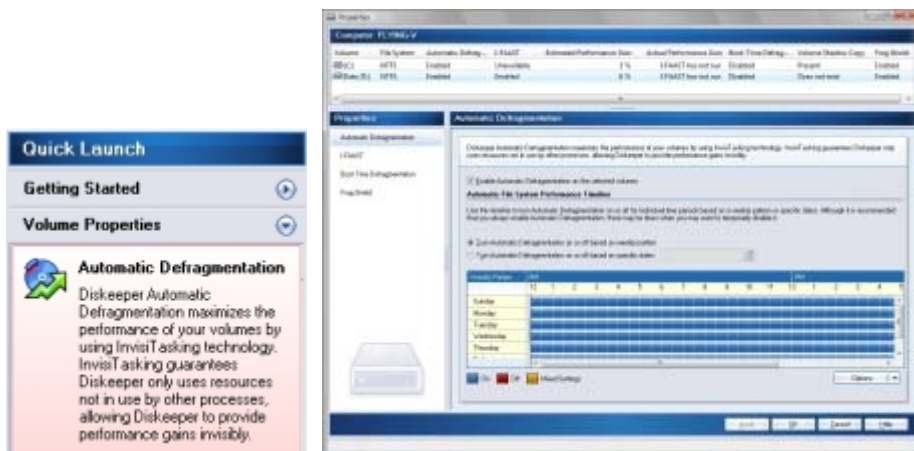
5. Repeat steps 1 through 4 above for each volume on your system.

## Automatic Defragmentation

During installation you were given the option to enable Automatic Defragmentation. By default it is enabled on all your volumes, and we recommend keeping it turned on. Automatic Defragmentation defragments files and free space on the fly. As fragmentation occurs, Diskeeper will handle it, in real-time!

If you did not enable Automatic Defragmentation during the installation, we recommend you follow the steps below to *Set It and Forget It*.

Expand the Volume Properties task group in the Quick Launch pane, and select the **Automatic Defragmentation** option. Highlight all the drives on your system (you can hold down the <Ctrl> key and select more than one volume), select **Enable Automatic Defragmentation on the selected volumes**, then click **OK**.



Congratulations, you're done!

From this point on, Diskeeper will automatically maintain your volumes, working in the background with no further intervention from you.

## Following Up

To check on Diskeeper progress, open Diskeeper the next day and re-run the analysis on each of your volumes. Repeat steps 1 through 5 above to record analysis data (remember to save the results to a different file name than the "before" analysis results). By comparing the "before" and "after" reports, you can see the benefit Diskeeper provides to your system's performance and reliability.

The Historical Report tab is another great way to see the benefits of automatic defragmentation. The Historical Report shows graphs indicating the total number of fragments eliminated, the overall fragmentation level, and the file performance improvement gained by using Diskeeper. This information is shown for your computer overall, as well as on a per-volume basis. As you highlight each volume in the Computer pane, the information displayed in the Historical Report changes to reflect the selected volume.

Each graph in the Historical Report shows "before and after" results. Over time, the Historical Report tab will give you a good measure of the benefit Diskeeper provides.

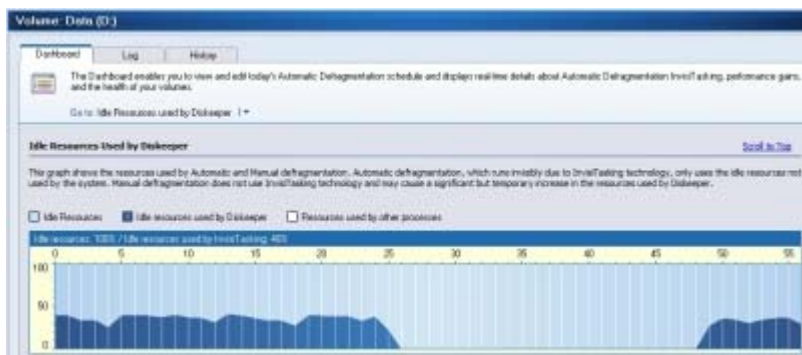
## Making Diskeeper Operation Transparent

Using the revolutionary InvisiTasking technology guarantees that Diskeeper will use only system resources that would be otherwise be wasted (idle time).

This technology allows Diskeeper to perform real-time defragmentation to continually keep your disk volumes in top shape, and ensures your computer's performance is never slowed down by the defragmentation process itself.

Diskeeper is designed to be run automatically in the background, so if you run Diskeeper manually, note that additional resources are required to continually refresh the user interface.

Also note that Manual Defragmentation jobs do not use InvisiTasking and will have a noticeable impact on your system when the job is running. Of course, with automatic Diskeeper technologies, manual defragmentation is not necessary.



## Summary

Remember that Diskeeper will defragment files and free space fragmentation on the fly. You never need to schedule or manually run defragmentation ever again. And with InvisiTasking, all you'll notice is that your system stays at top speed all the time!