

# PIXIL™ Thin Client

version 1.18

BIOS Setup

Network Setup

Making a Connection  
to a Server

Using the Citrix ICA  
Connection Manager

Hardware Settings

## **Copyright Notice**

Copyright 2005 by Century Software, Inc. All rights reserved. No part of this publication may be reproduced, transmitted, transcribed, stored in a retrieval system, or translated into any language or computer language, in any form or by any means, electronic, mechanical, magnetic, optical, chemical, manual or otherwise, without the written prior permission of Century Software, 5284 South Commerce Drive, Suite C-134, Salt Lake City, Utah 84107.

## **Restricted Rights Legend**

Use, duplication, or disclosure by the Government is subject to restrictions as set forth in subparagraph (c)(1)(ii) of the Rights in Technical Data and Computer Software clause at DFARS 52.227-7013.

## **Trademarks**

Century Software TinyTERM, TinyTERM PLUS and the “hub” logo are trademarks or registered trademarks of Century Software, Inc. MS-DOS, MS Windows, and XENIX are trademarks of Microsoft, Inc. UNIX is a registered trademark of AT&T., DEC is a registered trademark of Digital Equipment Corporation. Ethernet is a trademark of Xerox Corporation. VT320, VT220, VT100, VT52, VAX and ALL-IN-1 are trademarks of Digital Equipment Corporation. Compuserve and Compuserve B are trademarks of Compuserve Incorporated. IBM is a registered trademark of International Business Machines. Sequent is a trademark of Sequent Computers, Inc. Wyse 50 and Wyse 60 are trademarks of Wyse Technology, Inc. All other trademarks, trade names, or company names referenced herein are used for identification purposes only and are the property of their respective owners.

## **Disclaimer**

Century Software makes no representations or warranties with respect to this product or the contents hereof. This product (including both software and this manual) is sold as is and without any express warranty of any nature. ANY IMPLIED WARRANTY OF MERCHANTABILITY OR FITNESS FOR A PARTICULAR PURPOSE IS HEREBY DISCLAIMED.

## **Limitation of Liability**

In no event shall Century Software be liable for consequential damages, even if Century Software has been advised of the possibility of such damages. Further, Century Software reserves the right to revise this publication and to make changes from time to time in the contents hereof without obligation of Century Software to notify any person or organization of such revision or changes.

## Table of Contents

<b>1 BIOS Setup.....</b>	<b>1</b>
1.1 For All Boot Options .....	1
1.2 Video Memory.....	1
1.3 BIOS Setup, USB Booting .....	1
1.4 BIOS Setup, PXE Booting.....	2
<b>2 Network Setup.....</b>	<b>2</b>
2.1 Network Setup .....	2
2.2 Static Network Configuration.....	3
2.3 DHCP Network Configuration.....	3
<b>3 Making a Connection to a Server .....</b>	<b>4</b>
3.1 Making a Connection to a Server .....	4
3.2 Adding a New Connection .....	5
3.3 Deleting a Connection.....	5
3.4 Connecting .....	6
3.5 Making a Connection Start Automatically.....	6
<b>4 Using the Citrix ICA Connection Manager.....</b>	<b>7</b>
4.1 Using the Citrix ICA Connection Manager .....	7
<b>5 Hardware Settings.....</b>	<b>7</b>
5.1 Time.....	7
5.2 Keyboard Type.....	9
5.3 Screen Resolution.....	9

# 1 BIOS Setup

## 1.1 For All Boot Options

There are a number of BIOS options that must be set to gain full advantage of the hardware in the Dell OptiPlex units. Setting these options varies from unit to unit, but all are accomplished from the BIOS setup screen, reached by pressing F2 during the hardware check phase machine startup.

Normally in units shipped from Dell, for the purposes of PIXIL Thin Client, these options will have been pre-configured from the factory.

## 1.2 Video Memory

In the BIOS, video memory must be set to the highest value. On older versions of the BIOS this was set to 1MB which only allows very low display resolutions. For most versions of the BIOS, you can set this to 8MB. If there is a higher setting, you may use it as well.

## 1.3 BIOS Setup, USB Booting

For booting from USB keys, two options must be set. One, USB booting must be enabled in the hardware section of the BIOS. This is normally on by default. Two, you must ensure that USB devices are placed above any other viable boot options (such as a hard drive) in the boot order screen.

Some BIOS revisions have boot order settings that allow only hard drives to be selected. For these types, another setting is provided that allows you to choose which hard drive is “drive C”, the one that will be used for booting.

## 1.4 BIOS Setup, PXE Booting

For PXE booting, ensure that PXE boot is enabled for your built in Ethernet card in the hardware section of your BIOS setup. After this, ensure that PXE booting is at the top of the list of boot options in the boot order screen.

## 2 Network Setup

### 2.1 Network Setup

By default, PIXIL Thin Client comes set up for use with DHCP. That is, an IP address and other network configuration is received from a DHCP server on boot. This is the most common configuration. However, if you need to change this, PIXIL Thin Client fully supports static network configurations for use with USB and hard drive booting.



### 2.2 Static Network Configuration

If you don't have a DHCP server, a default configured PIXIL Thin Client image will appear to hang during the boot process. The boot process will continue after approximately 30 seconds.

After the Login Manager screen appears, select the "Network" tab and uncheck the "DHCP Configuration" option. This will make the static network settings available to you. Enter the values appropriate to your network and click the "Set" button. These settings are retained, so that on the next boot, the DHCP delay will be eliminated, and this setup step will not be required.



### 2.3 DHCP Network Configuration

After the Login Manager screen appears, select the "Network" tab and check the "DHCP Configuration" option. This will make the static network settings unavailable. Click on the "Set" button. This setting is retained, so that on the next reboot, this setting will not be needed.

After a reboot, your assigned DHCP address will be shown on the "Network" tab, in the disabled "IP Address" field.

## 3 Making a Connection to a Server

### 3.1 Making a Connection to a Server

After booting and the “Login Manager” appears, by default the “Login” tab is selected. This is the main interface used for defining connections to various types of servers, including Microsoft Terminal Servers, Citrix ICA Servers, and IBM hosts.

The “Connection” drop down menu allows various defined connections to be selected. Any new connections will be added to this drop down list. Connections preceded by an asterisk (\*) were defined using the Citrix ICA Manager, described later in this document.

On the right side of the window, another drop down shows the type of connection to make. Depending on the purchased options, this may include Citrix, Terminal Server, TELNET, IBM 5250, IBM 3270, and Web Browser.



To the left of the connection type are three fields that configure the particulars for each type of connections. The labels on

these fields change based on what type of connection you are making, but in general, the first field is either the hostname, IP address, or URL to connect to; the second field is the username to use for the connection; and the third field is the password.

### 3.2 Adding a New Connection

1. Click on the New Button. This will clear all the fields and allow you to change the settings. Enter a name in the Connection Name field. This will be the name that appears in the Connection drop down menu.
2. Select the type of connection from the drop down menu on the right of the window.
3. For all connections except Web Browser, enter the hostname or IP address in the Hostname field. For browser connection types, enter the URL to connect to.
4. Enter the username and password, if necessary. These can be left blank for all connection types. If needed, you will be prompted for them.
5. Click on the Save button.

Connections made in this manner will be saved permanently if booting from USB or hard drive. For PXE or CD booting, the changes made are temporary - they are lost upon the next boot.

### 3.3 Deleting a Connection

1. Select the connection you wish to delete from the Connection drop down menu.
2. Click on the Delete button.

Connections preceded by an asterisk (\*) cannot be deleted in this manner. They must be deleted from the Citrix ICA Connection Manager.

Connections are deleted permanently if booting from USB or hard drive. For PXE or CD booting, the changes made are temporary - they are lost upon the next boot.

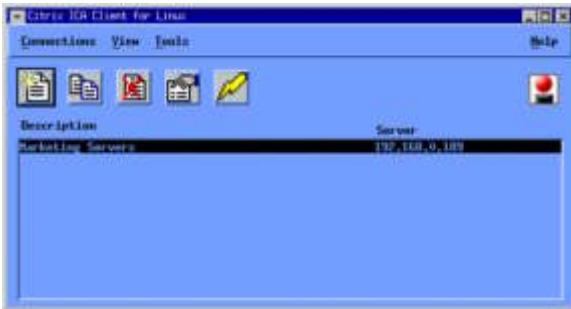
### 3.4 Connecting

1. Select the connection you wish to use from the Connection drop down menu.
2. Click on the Connect... button

### 3.5 Making a Connection Start Automatically

You can automatically start a connection when PIXIL Thin Client boots. Only one connection can be used in this way. To set this:

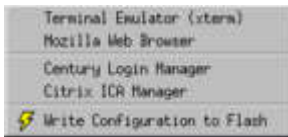
1. Select the connection you wish to use from the Connection drop down menu.
2. Check the Launch Configuration on Startup option on the Login tab.
3. Click on the Save button.



# 4 Using the Citrix ICA Connection Manager

## 4.1 Using the Citrix ICA Connection Manager

For certain advanced options (configuring remotely mounted storage, for instance) you may need access to the full Citrix ICA configuration interface. To access this, left-click in the background of the PIXIL Thin Client screen and select “Citrix ICA Manager” from the resulting menu. This will launch the standard Citrix interface, and allow you to configure the full range of options.



Configurations made in this manner will appear in the PIXIL Login Manager, preceded by an asterisk (\*). These connections can be launched from the Login Manager, but cannot otherwise be edited, except by returning to the Citrix ICA Manager.

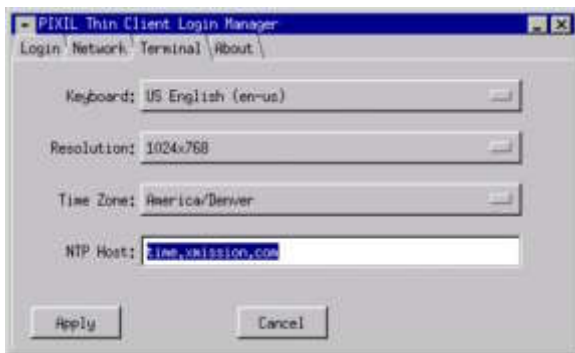
# 5 Hardware Settings

## 5.1 Time

For some Citrix ICA and Microsoft Terminal servers, the local client must provide time zone information in order to properly calculate the time as well as for applications for which time is important (such as schedulers, etc.) These are typically used in situations where users are connected to servers physically located far away.

To set the time on the client, PIXIL Thin Client uses a standard NTP time server to synchronize its local

clock and a timezone setting. These settings are located on the “Terminal” tab of the Login Manager.



The “Time Zone” drop down menu shows the available time zone settings. By default, PIXIL Thin Client displays all time zone selections for North and South America. Others can be turned on by contacting Century Software support.

The “NTP Host” text field allow the entry of the IP address or host name of the NTP time server.

Click the “Apply” button when you are done with these settings. PIXIL Thin Client will reset and the new settings will take effect.

### 5.2 Keyboard Type

PIXIL Thin Client allows virtually any type of PC keyboard to be used, including nearly all languages. By default, PIXIL comes configured with support for English, German, two versions of Italian, and French keyboards. For additional keyboard selections, please contact Century Software for customization options.

Keyboards are selected from the Terminal tab of the PIXIL Login Manager:

1. Select the Terminal tab in the PIXIL Login Manager.
2. Use the Keyboard drop down menu to select the keyboard attached to the system.
3. Click on the Apply button. This will reset PIXIL Thin Client, making your keyboard active.

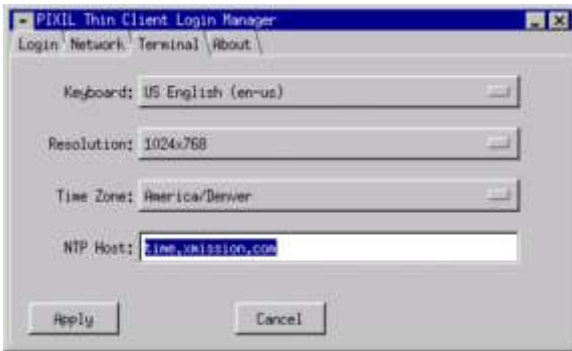
When connecting to a Microsoft Terminal Server or Citrix ICA Server, these keyboard settings will be passed to the remote server and will be active as the default keyboard type for your session. Depending on the policy of the server, this may also allow you to select a different keyboard type dynamically from within your terminal services session.

For USB and Hard Drive boot options, this setting is permanent.

### 5.3 Screen Resolution

The default PIXIL Thin Client configuration specifies a screen resolution of 1024x768. This can be changed on the “Terminal” tab of the PIXIL Login Manager:

1. Select the Terminal tab in the PIXIL Login Manager.
2. Use the Resolution drop down menu to select the desired resolution.
3. Click on the Apply button. This will reset PIXIL Thin Client, and your new resolution will be active.



Not all supported hardware can utilize the highest resolution, 1280x1024. In this case, the next highest resolution (usually 1024x768) will be selected automatically when PIXIL Thin Client resets.

For Microsoft Terminal Services and Citrix ICA sessions, the remote server will adapt to your chosen screen resolution. In certain cases, policies may have been established which prevents higher resolutions from being used. In this case, only a portion of your screen will be taken up by the connected session. In rare cases, connections may be rejected because of this policy. In this case, changing the resolution back to a compatible setting is the only option.



**CENTURY**

S O F T W A R E

SECURE CONNECTIVITY SOLUTIONS

5284 South Commerce Dr. Suite C-134  
Salt Lake City, Utah 84107

Toll Free (800) 877-3088  
Phone (801) 268-3088  
Fax (801) 268-2772  
E-mail [sales@centurysoftware.com](mailto:sales@centurysoftware.com)  
Web [www.centurysoftware.com](http://www.centurysoftware.com)

Copyright © 1985-2005 Century Software, Inc. All Rights Reserved. Century Software, TinyTERM Plus and the "hub" logo are trademarks or registered trademarks of Century Software, Inc. All other trademarks, trade names, or company names referenced herein are used for identification purposes only and are the property of their respective owners.

CS-PIXIL-QSG-060905-EN